



# INVELCO S.A.

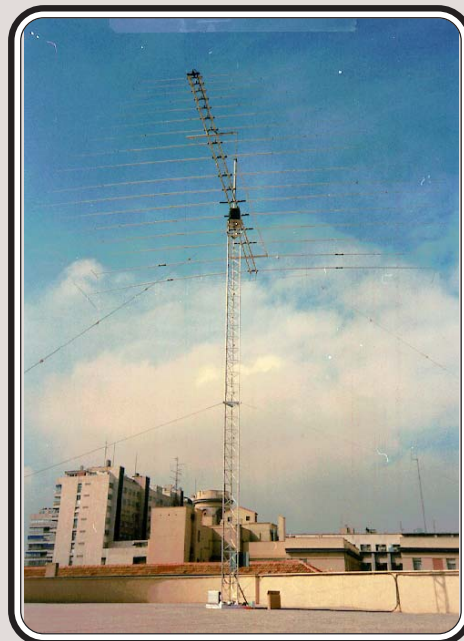
INVESTIGACIONES ELECTRONICAS Y COMUNICACIONES

**TELEX** *hy-gain*

TELEX COMMUNICATIONS, INC.

HF Directional antenna of high gain for medium and long communications distance, with possibility of orientation by remote control.

Ideal for sites where are demanded minimal size and weight conditions .



## LOG-PERIODIC ANTENNA MODEL LP-1017

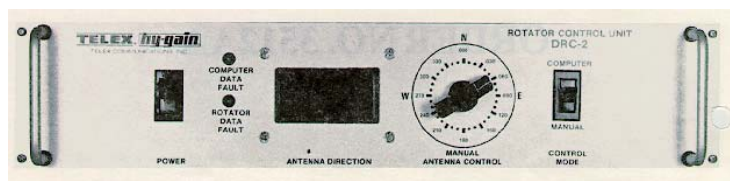
### TECHNICAL CHARACTERISTICS :

- Frequency range ..... 6.2 - 30 Mhz.
- Admissible power ..... 2 Kw pep.  
1 Kw avg.
- Polarization ..... Horizontal.
- Gain ..... 12 db.
- SWR Maximum ..... 2.5:1
- Impedance ..... 50 Ohm.
- Input connector ..... Type «N».
- Vertical angle of maximum radiation ..... 35°
- Boom length ..... 11.52 mts.
- Larger element ..... 15.06 mts.
- Total number of elements ..... 17
- Weight ..... 173 Kg.
- Wind resistance ..... 128 Km/h.

**\* R-3501 ROTOR**



- Rotor power ..... 9000 Kg.cmt.
- Rupture capacity ..... 23000 Kg.cmt.
- Maximum vertical load ..... 500 Kg.
- Rotation speed ..... 1 rpm.
- Position precision .....  $\pm 5\%$ .
- Mechanism ..... Chaingear.
- Engine power ..... 1/3 C.V.
- Power supply ..... 125/220 Vac
- Reduction ..... 1800:1.
- Operating temperature .....  $-40^{\circ}$  a  $+70^{\circ}$  C
- Advance/backing handling delay ..... 5 seg.
- Weigth ..... 148 Kg.



**\* DRC-1 REMOTE CONTROL**

- Power supply ..... 125/220 Vac.
- Operation temperature .....  $-40^{\circ}$  to  $+70^{\circ}$  C
- Increase in steps of .....  $10^{\circ}$ .
- Precision .....  $\pm 5\%$ .
- Control ..... By telephone line.
- Line impedance ..... 600 Ohms.
- Data transmission level ..... -10dBm.
- Data reception level ..... -10 to -30 dBm